



Think Ahead



**BIMTECH**  
**BIRLA INSTITUTE**  
OF MANAGEMENT TECHNOLOGY

# **PGDM** **(EXECUTIVE)**

INTERNATIONAL ACCOUNTING

15 Months Programme  
AICTE Approved, Ministry of HRD

REIMAGINING FUTURE IN PROFESSIONAL ACCOUNTING AND LEADERSHIP







**ASPIRE**  
**TRANSFORM**  
**LEAD**

Shot on location © BIMTECH Campus



BIMTECH IS A LEADER IN MANAGEMENT EDUCATION IN THE COUNTRY.  
THESE ARE FEW FIRSTS OF THE INSTITUTE.

# BIMTECH FIRSTS

BIMTECH is a leader in management education in the country. Visit a sample of the few firsts of the institute.

1988

First Business School of  
Birla Group of Companies

1988

PGDM Executive  
Programme

2000 First Masters in Insurance Business

2002

First Masters in  
Retail Management

2010

First Masters in  
Sustainable Development Practices

## CONTENT

ABOUT THE INSTITUTE	02	ADMISSION PROCESS	14
ACCREDITATION AND RANKING	03	MENTORS AND FACULTY	18
ABOUT ACCA	04	OUR INTERNATIONAL PARTNERS	20
CHAIRPERSON'S MESSAGE	06	OUR PLACEMENTS	22
DIRECTOR'S MESSAGE	07	CAMPUS FACILITIES	24
MESSAGE - HEAD INTERNATIONAL DEVELOPMENT, ACCA	08	LIFE @ CAMPUS	
PGDM (EXECUTIVE) INTERNATIONAL ACCOUNTING	09		
COURSE STRUCTURE	13		

# ABOUT THE INSTITUTE

The Birla Institute of Management Technology (BIMTECH) was established in 1988 under the aegis of the Birla Academy of Art and Culture. Syt. B. K. Birla, Chairperson of the B. K. Birla Group of Companies and Late Dr. (Smt.) Sarala Birla, are the founders of BIMTECH. The Institute is governed by an eminent Board of Governors mostly drawn from the top echelons of industry. The Institute is supported by the B. K. Birla Group and the Aditya Birla Group of Companies.

The fully residential campus of the Birla Institute of Management Technology (BIMTECH) is located in the National Capital Region, Delhi (NCR). It has an enviable infrastructure fully connected with Wi-Fi. Its ambience is predominantly green.

An industry rich and strong research oriented team of 60 plus faculty members engage and mentor the students in their degree journey. The best practices and in-industry growth are supplemented by industry professionals who are in senior positions in companies engaged in manufacturing, trading, financial services, and operations etc. in different industry sectors.

BIMTECH has establish strong industry linkages through its MDPs, Consultancy, Research Projects,

Short Term Projects, Colloquiums, Round Tables, Seminars, Conferences, Workshops and Panel Discussions etc. that support the corporate relations office to reach to companies for internship and employment opportunities to students. We invite around 120 companies every year for final employment opportunities.

Alumni base of more than 7000 professionals in the world is one of the biggest asset, and we are proud of it. Alumni has self-standing presence in 16 locations in the world including USA, France, UK, Singapore, Middle East, and East Africa.

Highest rated accreditations by the regulator AICTE and NAAC accreditation helps BIMTECH to be known as double STAR Indian accredited institution. International accreditation, AACSB, award will give the best of the world to be in 1 percent club.

The cultural diversity of BIMTECH makes it an exciting location. Students and faculty from almost all states of India and few foreign countries makes it an enriching experience in the class and beyond classroom. Everyone has opportunity to make a global network which transforms to a professional opportunity in years to come.

## OUR VISION

DEVELOPING ETHICAL LEADERS  
WITH ENTREPRENEURIAL AND  
GLOBAL MINDSET STRIVING FOR  
SUSTAINABILITY AND  
INCLUSIVE GROWTH.

# INSTITUTIONAL ACCREDITATION



BIMTECH has been granted A+ Grade Accreditation by the National Assessment and Accreditation Council (NAAC) for 5 years up to May 1, 2022.



National Accreditation by  
National Board of Accreditation



Certification Accreditation by  
Chartered Insurance Institute (CII)-UK, Life Office Management  
Association (LOMA)-USA and International Institute of Business  
Analysis (IIBA)-Canada



International Accreditation

AACSB, USA which is best in the world is in final stage



Equivalence of all PGDM programmes with  
MBA degree by Association of Indian  
Universities (AIU)



BIMTECH Achieved the prestigious CATEGORY 1 Graded Autonomy Status by AICTE  
(only 2 Institutions achieved this recognition in the country)

# PRIVATE BUSINESS SCHOOL RANKING

## 6th

NHRDN & HT MEDIA  
B-School Ranking

## 13th

Business Today - MDRA  
B-School Ranking

## 10th

 MBAUniverse Management Institute Ranking

# ASSOCIATION OF CHARTERED CERTIFIED ACCOUNTANTS

A black and white photograph of chess pieces on a checkered board. A white king piece stands prominently on the right, while a black king piece lies on its side to the left. A small black cross-shaped piece is positioned between them. The background is dark, creating a dramatic effect.

ACCA

## THE WORLD'S MOST FORWARD-THINKING PROFESSIONAL ACCOUNTANCY BODY

ACCA (the Association of Chartered Certified Accountants) is the global body for professional accountants, offering business relevant, first-choice qualifications to people of application, ability and ambition around the world who seek a rewarding career in accountancy, finance and management.

ACCA supports its 227,000 members and 544,000 students (including affiliates) in 180 countries, helping them to develop successful careers in accounting and business, with the skills required by employers. ACCA works through a network of 110 offices and centres and 7,571 Approved Employers worldwide, and 328 approved learning providers who provide high standards of learning and development.

Through its public interest remit, ACCA promotes appropriate regulation of accounting and conducts relevant research to ensure accountancy continues to grow in reputation and influence.

ACCA has introduced major innovations to its flagship qualification to ensure its members and future members continue to be the most valued, up to date and sought-after accountancy professionals globally.

Founded in 1904, ACCA has consistently held unique core values: opportunity, diversity, innovation, integrity and accountability

**1904**  
ACCA  
Foundation

**180**  
COUNTRIES  
NETWORK

**7500**  
APPROVED  
EMPLOYERS

**227000**  
ACCA  
MEMBERS

**544000**  
STUDENTS





ACCA

# Business models of the future:

Systems,  
convergence and  
characteristics

Think Ahead





**Mrs Jayshree Mohta**  
Chairperson, Board of Governors

We live in interesting times.

There is an air of optimism today among the young professionals in the country. For they see infinite possibilities unfolding before them whether it be as entrepreneurs or as corporate movers and shakers. BIMTECH is playing a significant role in converting this positive feeling of many bright women and men into transformative learning, not only in the domain of management but also in life skills.

For the last 30 years, BIMTECH has played its role in imparting cutting edge management education to generations who have risen to the highest positions in industry, media, government, entrepreneurship and academics.

BIMTECH's success can be attributed to its iconic and committed professors, its ability to quickly convert trends into actionable learning, its global network for students' opportunity and research, and finally and most critical is support of alumni in career advancement.

The professional approach of institution has been recognised as a place for high diversity, interaction and learning. We are glad that ACCA, chartered institution of about 115 years partners with us to contribute in leadership development in Professional Accounting domain. We welcome the partnership and commit to the purpose.

I welcome you warmly to the portals of BIMTECH!



SHRI A K AGARWALA



SHRI GN BAJPAI



DR. AJIT RANADE



SHRI VIKASH KANDOI



SHRI SAKATE KHAITAN



DR H CHATURVEDI



DR ANUPAM VARMA



SHRI ALOK GUPTA



DR MANOSI CHAUDHURI

**BOARD OF  
GOVERNORS**





**Dr. H. Chaturvedi**

Director

The economy and leadership is gearing up for new age. With the new globalisation in place and digital interventions in local and global marketplaces, future leaders need to manage local and global challenges in a distinctly personal way. This will be an indispensable prerequisite to prosper with your organization and reinforce your new career development. This is more true for financial and accounting professionals who are closely responsible for governance of the corporations and industry.

We conceptualise this new programme in partnership with ACCA which is considered as world's most forward-thinking professional accountancy body. BIMTECH and ACCA share same mission and values to engage with the stakeholders and community.

When we imagine management education for executives, the business and leadership matrix changes to meet the needs of local giants becoming global multinationals, digital age companies emerging as new business statements, and global companies exploring to be more local. The knowledge, skill set and methods of managing and doing business is different, and we need to cognitively learn the differences along with hard knowledge and skills of the game.

Our school has partnered with ACCA, a charter institution and global leader in professional accounting certification, prepares one for resilient times, puts in global network and presents to global experts in the domain. The experiences of participants when discussed in an animated class setting with best of the professors and experts, aims to deliver a new age economy. BIMTECH's PGDM (Executive) in International Accounting with joint certification with ACCA is aimed at transforming today's professionals into a responsible leaders of tomorrow in finance and accounting domain. Their mentoring and grooming is in the capable hands of very experienced faculty.

Our mutual industry network and alumni are the biggest achievement of the school, and our international partners are the biggest value. The team of faculty welcomes you in class to make a great class with you.



**DR. ANUPAM VARMA**  
DY. DIRECTOR &  
DEAN-ACADEMICS



**DR. A. SAHAY**  
DEAN  
RESEARCH



**DR. K. C. ARORA**  
REGISTRAR



**PROF. KISHORE K. SINHA**  
DEAN  
EXECUTIVE EDUCATION



**PROF. K. R. CHARI**  
DEAN-STUDENT WELFARE &  
SUPPORT SERVICES

**LEADERSHIP  
TEAM**

**Md. Sajid Khan**

Head of International Development  
Association of Chartered Certified  
Accountants (ACCA)

The global economy is going through a time of unprecedented change. Unstoppable forces like globalisation, digital technology, regulatory pressure and changing social expectations are transforming the business landscape, which means we need high-quality professional accountants more than ever. In this increasingly complex and unpredictable world, professional accountants are a force for good – the people who all organisations and their stakeholders can rely on.

In such a constantly disrupted business environment, the overwhelming evidence is that while businesses and other organisations will always need professional accountants with the best possible technical skills, they now look for more. They need forward-looking, strategic thinkers with a blend of business and finance skills. And they need excellent communicators with ethical integrity.

BIMTECH's ACCA embedded programme PGDM (Executive) is aimed at developing professional as well as technical skills and ethics, reinforcing ACCA members' reputation as comprehensive finance professionals. Employers across the globe seek out ACCA-trained professionals – because they know they have the strategic thinking, technical skills, and professional values to drive their organisations forward.

When you study with ACCA, you can take your career in any direction. You open doors to the best and most interesting roles all over the world. And you become one of the sought-after finance professionals our fast-changing world needs.

It's a rewarding and intense path – and we're here to support you at every stage of your career, working closely with BIMTECH.



**TRANSFORM  
LEAD**

# **PGDM**

## **(Executive)**

**INTERNATIONAL ACCOUNTING**

15 Months Programme  
AICTE Approved, Ministry of HRD



# INDUSTRY 4.0

Business model of the future

Tenets of good corporate governance

Learning for the future

Global Economic Conditions Survey

The power of future ready talent

Leading finance digital transformation



The Executive Programme brings smart professionals in one cohort who bring amazing perspectives to this extraordinary group.

An ecosystem and unique environment of learning enables them to discover their true capacity, unlock their real potential and then prepares them at an incredible pace of change to deal with complexities in the world of business today. They emerge as a new person and professional with his or her own vision and ability to contribute to organizations and society.

The Executive Programme not only gives rigor on fundamentals of professional accounting but also prepares for transformational leadership, which is induced through few signature touch-points. World-class mentors and professors, industry network and more than 400 CXOs alumni make the complete experience of a 'Leader in Making'. While the destination is worthy, the journey itself is enriching.

## **RAHUL SINGH**

Professor of Strategy and Globalization  
Chairperson, PGDM (Executive)



You are at a point in your career, when the next opportunity is in all probability not obvious and the path to success is no longer visible. At this point, strong functional skillset and specialist experience is no longer sufficient to move up the career graph.

Success today and in the near future will be defined by your ability to stay relevant, operate in a VUCA world, and lead in the digital transformation era where business models are constantly getting disrupted, industry 4.0 is a reality, reverse globalization, automation, data science are no longer catch words or futuristic and AI is slowly getting all-pervasive, across industry sectors, domains and skills including accounting and finance.

What is obvious to you by now is what got you here, won't get you to your next success. Success will be your ability to see what others do not and prepare you for what is yet to come. At this point, redirect yourself to equip, expose and experience as a leader for tomorrow.

The PGDM (Executive) International Accounting Programme is designed to help you achieving aspirations of leadership in the industry.

**ASPIRE. TRANSFORM. LEAD.**

## POST GRADUATE DIPLOMA IN MANAGEMENT (EXECUTIVE) INTERNATIONAL ACCOUNTING

The Birla Institute Post Graduate Diploma in Management (Executive) in International Accounting is developed to prepare industry future workforce into actors and leaders. It is designed to meet the industry needs of mid management space who develop to the industry lead in future. Designed with specialized knowledge personalized coaching, interpersonal skills and effective communication on one hand and fundamental ability to think and design the knowledge on another, will transform the hardworking professionals into a future leaders in industry.

The programme aims to cultivate a professional with high domain knowledge, ability to work in team, plan a job to be achieved, and capable of being an independent leader. Programme positioning is based on the industry need assessment which direct to

- Accounting and Business Fundamentals
- Financing Modeling and Strategic Capabilities
- Integrating Business Functions
- Digital Leadership Skills
- Decision making and Solution Focus

Our focus on accounting and finance core, digital transformation, strategic analytics and leadership development provides a commanding underpinning for applying course work that accentuates management principles in a competitive and highly progressive economy. The program design and curriculum emphasizes fundamentals in initial phase and key industry and functional areas in phase two.

WORK AND COMMUNICATE  
IN DIVERSE TEAMS

TEACHING, MENTORING  
AND COACHING

PRACTICUM OF FUNDAMENTAL  
AND EXPERIENTIAL  
LEARNING

ENGAGING WITH  
GLOBAL EXPERTS  
IN THE DOMAIN

### PROGRAMME OBJECTIVES:

- Delivering specialised knowledge in finance and management
- Develop understanding in finance, strategy and valuation
- Global skills set from leading academics and practitioners
- Capacity enhancement in governance and decision-making
- Developing Insight in Digital transformation and Problem Solving



# ASPIRE

## PROGRAMME CANOPY

The Executive programme is an opportunity for accounting and finance professionals to acquire a professional management qualification and experience the intellectual stimulation of a masters class. Participants develop a thorough understanding of the principles of problem solving, practices and principles in accounting and finance, strategy formulation, digital transformation and valuation enabling them to deal with the complex industry challenges and chalk out future growth of organisation.

- Fundamental Courses
- Domain Courses
- Experiential and Leadership Courses
- Practicum and Simulation Workshops
- International Market Exposure
- Modules with Global Leaders
- Industry and Consulting Projects



# COURSE STRUCTURE

---

The bouquet method of course selection offers flexibility to a participant to make own MBA. There need to be a right size of the course candidates. The verticals and domains present the courses in design to meet the programme aims.

## ACCOUNTING

- Business Scenario & Accounting
- Management Accounting
- Financial Accounting
- Performance Management
- Taxation
- Audit & Assurance

## FINANCE

- Financial Management
- Advanced Financial Management
- Financial Reporting
- Advanced Performance Management

## BUSINESS AND STRATEGY

- Design Thinking
- Strategic Business Reporting
- Strategic Management
- Consultancy Management

## ORGANIZATION BEHAVIOUR & HR

- Leadership & Change
- Negotiation Skills

## TECHNOLOGY

- Digital Economy & New Business Models

## LAW

- Corporate & Business Law

## MARKETING

- Marketing Management

## DATA SCIENCE

- Data & Decision Making

## GOVERNANCE & ETHICS

- Strategic Business Leader
- Ethics & Professional Module

## EXPERIENTIAL LEARNING

---

The practicum and exposure is planned through the simulation, real time team working and decision making in a context and by interactions with the industry experts and global faculty through the projects and Atal Incubation Centre . Projects and consulting offers an opportunity to work with the new-age companies to design for oneself a future with proven capabilities.

### SIMULATION

- Marketing Simulation
- Business Simulation

### PRATICUM & CONSULTING

- Project and Consulting Report Writing
- Industry Consulting Report
- CXO Mentoring & Coaching Report

### GLOBAL EXPOSURE

- Module at Global University Partner
- Visit to Selected Global Firms
- Module at Global Rank Indian School

## ADMISSION CRITERIA, FEE AND PROCESS

---

No. of Seats	Eligibility & Selection Criteria	Programme Tuition Fee
30	Graduation with Min. 50% and valid AICTE National Admission Test (CAT, XAT, GMAT, CMAT etc.)	INR 14,00,000

S. No.	Selection Process	Weightage
1	Application – Essay/Questions and Recommendations	25%
2	Admission test score of CAT/ XAT/ GMAT or other national tests	25%
3	Personal Interview	50%

### PAPERS FOR APPLICATION PROCESSING

- Filled application and admission fees
- Essay / Questions form
- Work experience certificate
- Mark sheet for master (if any) and graduation
- Certificate of merit (if any)
- One personal identification (Passport copy / Aadhar copy / PAN card copy)
- Passport details and Local Personal ID (for foreign students)



Choosing a career is a life-defining decision and it requires in-depth information about the program and the institute. Guided by our values of "integrity and transparency" we have put our best to provide all information which would possibly be required by parents and aspirants to make an informed decision. All the best!

**Prof. Pratik Priyadarshi**

Associate Professor and  
PGDM (Executive) Programme Coordinator



## IMPORTANT NOTES

---

- 15 percent seats are categorized for sponsored and foreign students. Foreign participants' recruitment is subject to approval of regulator.
- ONE International Visit and ONE Module in India are programme requirement. These expenses will be borne by the participant. Institute will provide financial assistance for INR 1.00 Lac to the needy aspirants as scholarship.
- Residential Fee which includes lodging and food and other costs is separate and will be charged at INR 1,92,000 (including GST) for single occupancy room for ONE YEAR. There is no double occupancy room offered for PGDM (Executive) participants.
- Scholarships and Financial Aid will be on case to case basis. Institute also has provisions to facilitate Study Loan from BIMTECH partner banks.







Incubation and Innovation  
Center @ BIMTECH

[www.pgpx.bimtech.ac.in](http://www.pgpx.bimtech.ac.in)



**ASPIRE**  
**TRANSFORM**  
**LEAD**

MENTORS AND FACULTY  
GLOBAL EXPOSURE  
NETWORKING  
CAREER OPPORTUNITIES

## ADVISORY BOARD, MENTORS AND FACULTY

---

Our multi-faceted advisory board provides strategic vision and direction to the programme. Under their mentorship the programme aims to deliver holistic learning and development.

Faculty the 'key resource' of BIMTECH boasts of great industry rich and research positive experience, benefiting the class with fundamentals and practices. A collective, inspired 60 plus full time faculty and 20 plus strong visiting industry and international faculty make the class enriching and practical.

PGDM (Executive) has higher degree of both fundamental and practice in the class for the real C-suite training. We expect senior industry professionals, consulting giants, entrepreneurs, global faculty in particular domains and the tools and techniques leaders to deliver mentoring, classes and experiences with the PGDM (Executive) batch.



**MD. SAJID KHAN**

Head of International Development  
Association of Chartered Certified  
Accountants (ACCA)



**SIDDHARTH TALWAR**

Partner Audit and Financial Reporting  
Advisory Services,  
Walker Chandio & Co LLP (Grant Thornton)



**SUNIL MITHAS**

World Class Scholar and Professor  
at the South Florida University  
and University of Maryland



**SANTOSH DESAI**

Managing Director & CEO,  
Future Brands Ltd.,  
Author, Columnist, Social Commentator



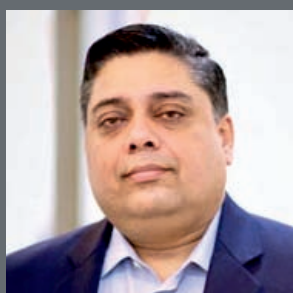
**RENJITH VARMA**

Head of Partnerships  
Emerging Markets, ACCA, UK



**SAKATE KHAITAN**

Sr Partner, Khaitan Legal Associates  
and M&A and Restructuring Expert



**MANOJ KUMAR**

Senior Advisor, Tata Trusts,  
India and Social Business Global Leads



**VIVEK SINGH**

CEO, Innovant International  
Technology and Innovation Expert



**VIVEK MISHRA**

Chief People Officer  
PwC SDC

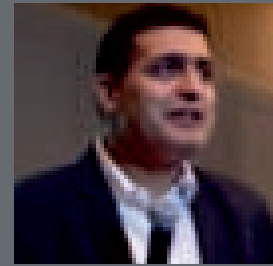




**D K MALHOTRA**  
Professor of Finance at  
Thomas Jefferson University, USA



**DR RISHI BHATNAGAR**  
President, Aeris Communications and  
Chairman, IoT India Congress



**PANKAJ DHINGRA**  
Global Finance Director  
Boston Consulting Group



**AJIT SHAH**  
Managing Director, Asia Pacific  
ACTICO, Singapore and  
FINTECH Expert



**SARVESH MATHUR**  
Executive Director, GDS  
E & Y India



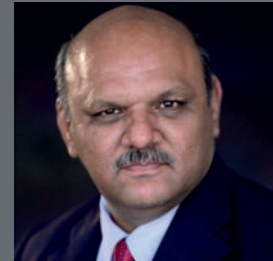
**MUNISH SETH**  
Country Director-Android  
Google



**MUSTAFA MEHRIM**  
Chief Financial Officer  
Dubai Cares



**AMLAN BHUSHAN**  
Director, GWB Advisory



**SUNIL SANGRA**  
Professor in Strategy and  
International Business and  
Global Expert on Design Thinking



**DHRUVA CHAK**  
Professor in Marketing and  
Communications,  
Former CEO of Gati Ltd.



**ASHOK MALHOTRA**  
Professor in Accounting and  
Finance and former Board of  
Directors of STG Group



**S S DUBEY**  
Professor and  
Head of IT Area



**RAJEEV SHARMA**  
Assistant Professor in  
Supply Chain &  
Operations Management



**ABHA RISHI**  
Associate Professor in Entrepreneurship  
and Innovation and CEO  
of Atal Incubation Centre

## OUR INTERNATIONAL PARTNERS

Fulfilling the aspirations of the programme and students, BIMTECH has global partners to deliver the programme, present student exchange opportunities and other global exposure facilitations to students. This is also a unique opportunity to become a global alumni of partner institutions. With about 65 international partners, we provide transformational experience to our students. Some of our partners are;

South Korea	Solbridge International School of Business
France	KEDGE Business School
France	IESEG School of Management
Canada	Goodman School of Business, Brock University
South Africa	University of Stellenbosch Business School
Poland	Kozmenski University
Spain	Universidad Autónoma de Madrid (UAM)
Thailand	Asian Institute of Technology
UK	University of Hull
Singapore	Singapore Management University
USA	University of Nebraska at Omaha
USA	University of South Florida

65  INTERNATIONAL  
PARTNERS







Students from Exchange Programme @ BIMTECH Campus



A black and white photograph of three young men in business attire (white shirts and dark jackets) looking at a laptop screen. The man in the center is wearing glasses and has a slight smile. The man on the right is also wearing glasses and has a beard, smiling. The man on the left is partially visible, wearing glasses. The background is bright and out of focus.

## OUR PLACEMENTS

The applied face of the programme is led by the Centre for Corporate Relations. This presents the passing out batch to the industry for final employment. The centre supports in reaching out to companies for placement and project consulting or internship, offering continuous career advancement guidance, and strengthening student's networking with corporates.

The centre helps in guidance on resume writing skills, soft skills workshops, arranging special lectures by leading recruiters, pre-placement talks, and sharing audio or video material to enhance student competencies.

## CAMPUS RECRUITERS



## ACCA PARTNERS AND EMPLOYERS

# CAMPUS FACILITIES

---

## I.T. RESOURCES

The information technology facility is the speed resource of the institute. The computer lab in the academic block, with internet Wi-Fi connectivity in the hostel rooms, makes it easy to access the material provided by the faculty. Round-the-clock internet facility connects students with the world through lightning fast, 200 MBPS internet.

Students of all programmes are always encouraged to bring their laptops for uninterrupted utilisation of the facility. The campus is fully wired and provides 100 terminals to connect at various locations. INTRANET usage is encouraged in students, for online discussions and interaction as well as material sharing.

## KNOWLEDGE CENTRE

The BIMTECH Knowledge Centre is an essential component of BIMTECH's research and education mission. The combination of carefully selected traditional and digital resources via a browsing interface, supported by an exceptionally fast, response service, provides the BIMTECH community a library that is worthy of this world class institution.

The library is enriched with digital facilities and computer systems. Free access of this is made available to students, ex-students, researchers, workers, faculty, staff and visitors. The library frequently organises book exhibitions and displays new arrivals etc.

## COLLECTIONS

- Books: 83,721 (as on 15/07/2020)
- Magazines/Journals (Print): 157
- Online Journals (Full Text): 8,315
- Non-books materials: 3

## ON-LINE DATABASES & RESOURCES

- Harvard Business School Material
- The Case Centre
- ACE EQUITY
- Indiatat
- Euromonitor Passport GMID
- EBSCO host
- Proquest
- Emerald
- Thomson Reuters-ELKON
- BLoC (Business Line on Campus)
- Turnitin-Anti Plagiarism Software
- DELNET
- National Digital Library
- NPTEL
- Atlas.ti

**Programmes at BIMTECH are residential (optional) so it offers hostel facilities to all students. BIMTECH has adequate on and off campus hostel facilities. Both hostels provide at-par ultra-modern living environs. Rooms in hostels can be used on single or twin sharing basis, depending on the charges. The hostels are designed to provide a proper mix of privacy and a unique social experience.**





## CAMPUS, COMMUNITY AND LIFE @ BIMTECH

---



**Wi-Fi enabled  
Campus**

BIMTECH is located on a composite, fully air-conditioned, Wi-Fi enabled, residential campus in Greater Noida, in the National Capital Region, a few kilometers from the capital of India. The campus environment is highly conducive to academic learning.

A residential programme in itself accords an unparalleled opportunity of experiential learning in the skills of relationship management. The self-contained compact campus that BIMTECH offers only enhances the learning opportunities and experiences.



**Fully  
air-conditioned  
Campus**

**BIMTECH provides comfortable living with facilities such as:**

- Dining hall and Multi-cuisine cafeteria
- Modern gym & sports facility
- A serene meditation centre
- Salon & beauty parlour
- Tuck shop
- Bus transport facility to Noida
- Communication & reprographic facilities
- Bank ATM on campus
- Medical center and support
- Modern laundry services
- Lifts in the academic block/hostels
- Café Coffee Day outlet in the academic block

# PGDM

## (EXECUTIVE)

INTERNATIONAL ACCOUNTING

I/M 9312431409



**Toll Free Number: 1800 5723 999**  
**<https://pgpx.bimtech.ac.in>**

### BIRLA INSTITUTE OF MANAGEMENT TECHNOLOGY

Plot No. 5, Knowledge Park II  
Institutional Area, Greater Noida (NCR)  
Uttar Pradesh 201 306, India

**Tel: +91-0120-6843000 to 6843010, 9355024501 to 9355024510**  
**M: +91- 8287534144**  
**Email: [pgpx@bimtech.ac.in](mailto:pgpx@bimtech.ac.in)**

**f** <https://www.facebook.com/BIMTECH>

**in** <https://www.linkedin.com/company/bimtechgnoida/>

**@** <http://instagram.com/bimtechgnoida>

**t** <https://twitter.com/BIMTECHNoida>

**p** <https://www.pinterest.com/BimtechGNoida/>

**YouTube** <http://www.youtube.com/theBIMTECH>

**G+** <https://plus.google.com/+BirlaInstituteofManagementTechnologyGreaterNoida/posts>